

A black and white photograph of a male and female cabaret performer in a vintage setting. The male performer is in the foreground, shirtless and wearing suspenders, leaning against a railing. The female performer is behind him, wearing a dark corset and stockings, with her arms raised. The background shows a building facade with a sign that says "RIER KEMDINS". The title "CABARET" is overlaid in large red letters.

CABARET

12:34

microtechnologies

**Tailored Solutions.
Personalized service.**

Getting the most from your technology requires an understanding of the big picture, and seeing how the detailed pieces fit together. From hardware selection, to application optimization, 12:34 MicroTechnologies can help you grow your business and keep your data secure.



Hate IT?
The show must go on!

Pick a provider that
gets a curtain call.

119 Reese Ave. Lancaster PA, 17602

(717) 305-1234

Info@1234micro.com

www.1234micro.com

The Ephrata Performing Arts Center
Clark Associates and 12:34 MicroTechnologies
proudly present:

CABARET

book by **JOE MASTEROFF**
music by **JOHN KANDER**
lyrics by **FRED EBB**
based on the play by **JOHN VAN DRUTEN**
and stories by **CHRIS ISHERWOOD**

JULY 25-AUGUST 10, 2024

director
Ben Galosi

artistic director
Edward R. Fernandez

music director
Cheryl Markle

choreographer
Rebecca Gentry

stage manager
Halligan Upton

managing director
Alec Skwara

scenic designer
Andrue Morgan

lighting designer
Jeff Cusano

sound designer
Grant Patrick

costume designer
Lionella Darling

asst. costume designer
Brody Eisenhour

technical director
Steve Schelling

properties
Keith Eyrich

SPECIAL THANKS TO:



SEASON SPONSOR

12:34

microtechnologies

TECHNOLOGY SPONSOR



COMMUNITY PARTNER



LODGING SPONSOR

GRANTING PARTNERS:

Irene R. Weidman Charitable Trust
Lancaster County Community Foundation
LGBTQ+ Giving Circle
Acts of Generosity
The Borough of Ephrata

OPENING/CLOSING NIGHT SPONSOR:



**AMERICAN LEGION
POST 429**

ADDITIONAL THANKS TO:

Sheri Niven Photography
Scary Good Productions
Atomic
Dexter James Hafellner

EPAC Board of Directors

Dr. Andrea L. Glass, *President*

Liz Ackerman, *Secretary*

Douglas Smith, *Treasurer*

David Lyall

Jennifer Duby

Mayor Ralph Mowen

Sean Rigney

Samantha Maston

Steve Heffner

Tony Crerand

EPAC Staff

Edward R. Fernandez, *Artistic Director*

Alec Skwara, *Managing Director*

Kristen Hemsley, *Box Office Manager*

Zach Haines, *Media Director*

Kenneth Martin, *Development Partner*

Thomas Hudson, *Technical Consultant*

Steve Schelling, *Technical Director*

JP Welliver, *House Manager*

Ashlyn Frederick, *House Manager*

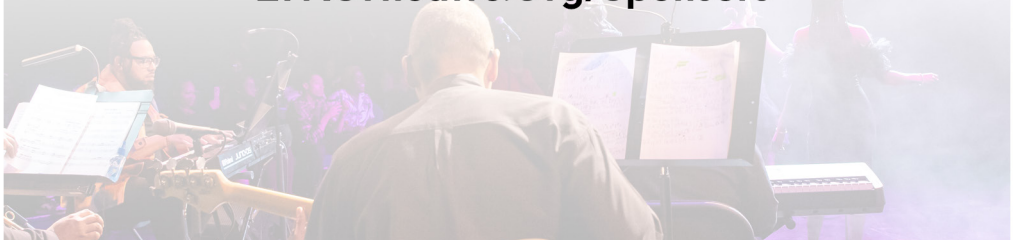
Aubree Snader, *House Manager*

Elvis Smith, *Bartender*

BECOME A SPONSOR!

EPAC offers a variety of sponsorship opportunities for businesses to partner with us to provide quality theatre to our community.

**For more information please visit:
EPACTheatre.Org/Sponsors**



AUDIENCE SERVICES

Coats:

A coat rack is available within the main lobby of the theater. EPAC is not responsible for any lost property. Please do not hang any personal property from railings in the theater.

Late Seating:

Latecomers will be seated at the discretion of Management.

Lost & Found:

Please see the Box Office for lost and found items.

Electronics:

PLEASE TURN OFF ALL CELL PHONES AND ELECTRONIC DEVICES, WHICH MAY INTERRUPT A PERFORMANCE. THE USE OF CAMERAS, VIDEO CAMERAS, AND OTHER RECORDING DEVICES IS STRICTLY FORBIDDEN.

Violators may be asked to leave at the discretion of Management.

Medical Emergencies:

Please report any medical emergency to the Management in the lobby or box office area. An AED machine is on premises.

Safety Notice:

For your safety, please do not leave your seat until the house lights come up.

Fire Notice:

In the event of a fire, please exit the theater in a calm and orderly manner, making your way to any available exit. Please walk; do not run.

Smoking Policy:

EPAC is a non-smoking facility; there is NO SMOKING within 15 feet of the building. Thank you!

Inclement Weather Policy:

EPAC makes every effort to remain open during the winter and hurricane season. However, we are aware that at times the weather makes this impossible. Please check EPAC website and social media pages to check on any inclement weather closings. Additionally, EPAC will be announced on the WGAL Closings and Delays Website.

Ticket Sales & Exchange Policy:

All sales are final, no refunds. Exchanges may be made no later than 24 hours before a performance. Non-subscribers will be charged a \$5 per ticket exchange fee. No exchanges will be made after curtain time for that performance.

This production contains mature themes and the use of herbal cigarettes.

CAST OF CABARET

Emcee.....	Tell Williams IV
Sally Bowles.....	Rachael Opdenaker
Cliff Bradshaw.....	Zach Haines
Fraulein Schneider.....	Julia Smith
Herr Schultz.....	Marc Lubbers
Fraulein Kost.....	Rachel Faust
Ernst Ludwig.....	Rogan Motter
Fritzie.....	Sean Davis
Texas.....	Elizabeth Zorzopian**
Frenchie.....	Sarah Reynolds*
Lulu.....	Clara Laube
Helga.....	Kat Thorpe
Rosie.....	Amanda Phillips
Victor.....	JP Welliver
Bobby.....	Jeremy Ebert
Hanz.....	Jeremy Andro
Herman.....	Sydney Thorpe
Max.....	Alec Skwara

PRODUCTION TEAM:

Ben Galosi.....	Director
Edward R. Fernandez.....	Artistic Director
Cheryl Markle.....	Music Director
Rebecca Gentry.....	Choreographer
Halligan Upton.....	Stage Manager
Jeff Cusano.....	Lighting Designer
Wyatt Burdick.....	Light Board Operator
Andrue Morgan.....	Scenic Designer/Artist
Grant Patrick.....	Sound Designer/Sound Board Operator
Lionella Darling.....	Costume Designer
Brody Eisenhour.....	Assistant Costume Designer
Keith Eyrich.....	Properties
Alec Skwara.....	Managing Director
Steve Schelling.....	Technical Director
Zach Haines.....	Media Director
Preston Cuer.....	Fight Choreographer

*Denotes Dance Capatin **Denotes Dialect Coach

MUSICAL NUMBERS

ACT I

Willkommen.....	Emcee & Company
So What?.....	Fraulein Scheider
Don't Tell Mama.....	Sally & Ensemble
Mein Herr.....	Sally & Ensemble
Perfectly Marvelous.....	Sally & Cliff
Two Ladies.....	Emcee & Kit Kat Girls
It Couldn't Please Me More.....	Fraulein Schneider & Herr Schultz
Tomorrow Belongs to Me.....	Emcee
Maybe This Time.....	Sally
Money.....	Emcee & Ensemble
Married.....	Fraulein Schneider, Herr Schultz, Fraulein Kost
Tomorrow Belongs to Me (Reprise).....	Fraulein Kost, Ernst, & Company

ACT II

Entr'acte.....	Orchestra
Married (Reprise).....	Fraulein Schneider & Herr Schultz
If You Could See Her.....	Emcee
What Would You Do?.....	Fraulein Schneider
I Don't Care Much.....	Emcee
Cabaret.....	Sally
Finale.....	Cliff & Emcee

The Orchestra

Piano/Conductor.....	Cheryl Markle
Piano/Conductor (<i>July 25</i>).....	Ryan Dean Schoening
Reed I.....	Kayla Keating
Reed II.....	Rick Ferrarelli
Trumpet.....	Sandy Harris
Cello.....	Caitlin Case
Percussion.....	Kathy Lubbers

Spotlight Operators:

Nicole Anderson, Damian Hemsley, Eric Hemsley

DIRECTOR'S NOTE:

When *Cabaret* first hit the stage in 1966, the Hal Prince helmed production sought to break the norms of the typical American musical and expose its audiences to a new kind of socially conscious and conceptually structured piece of musical theatre. In the midst of a politically active culture, *Cabaret* struck a chord with audiences. In 1972, the musical made its way to the big screen in Bob Fosse's celebrated film adaptation, where Fosse's choreographic style made an everlasting imprint on the show's public identity. Arguably, the most frequently recognized iteration of *Cabaret* did not emerge until 1993, when a new production directed by Sam Mendes fully realized the show's metaphor and completely reimagined the identity of its central figure. This bawdy representation of the Kit Kat Klub received two Broadway productions in 1998 and 2014, and has been aesthetically replicated in many regional and community theaters across the globe. Today, *Cabaret* has reentered the public conversation through a lavish production directed by the visionary Rebecca Frecknall, currently playing on Broadway and the West End. This production has reignited the debate over the musical's delivery systems and political function. Additionally, it has sparked conversation about the social responsibilities of artists who choose to put on this resonant piece of theatre.

It is not an accident when a new production of *Cabaret* springs up in a time of intense political turmoil. It is a show that speaks to any moment due to its consistently relevant themes of self-preservation, political apathy, and the seemingly inescapable forces of fascism. It explores the culture of progressive, queer artists in 1930's Weimar Berlin during a brief moment of sexual and artistic liberation. Opposing this culture is a nationalist political party that propagates the story of a once-great nation in decline, promising to restore its former glory by ridding the country of its impure internal enemies. The immediate translation of these paranoid obsessions into fascist language and behaviors is sickeningly recognizable for 21st-century audiences. *Cabaret* explores the dangers of our own complacency and political inaction when faced with the forces of evil. It is an audacious piece of political art that places a significant social responsibility on its audiences and the artists who choose to produce it. Therefore, it is irresponsible to engage with this piece of theatre without recognizing the presence of the dangerous behaviors and attitudes it portrays in our contemporary world. Our Kit Kat Klub, like the theatrical space that is housing it, represents a safe space for individualism and artistic freedom. We cannot underestimate how quickly these freedoms can be stripped from us and this temenos can be overrun.

This production of *Cabaret* is a celebration of all of its predecessors. It is both a compromise and a conversation between then and then and then and now and then. It is specifically tailored for this space and this community, and it would not be possible without the daring group of artists behind it and the generous support of the EPAC staff and board. Every artist and community member who has chosen to engage with this production is making the valuable choice to support theatre that matters. This choice molds our artistic present and future, supporting the essential survival of progressive artistic spaces.

- Ben Galosi, Director

MEET THE CAST



Jeremy Andro (Hanz) - Jeremy is excited to be making his first appearance on the Ephrata Performing Arts Center stage. Some of his favorite credits within school include *Clue*, *Once Upon a Mattress*, and *Beauty and the Beast*. A proud moment of his was being dance captain and assistant choreographer for *Beauty and the Beast*. Other favorite credits include *Mean Girls* (Kevin G) with Popovsky Performing Arts and *Hello Dolly* (2nd Cook) with Susquehanna Stage. He would like to thank all of his past directors and mentors for helping him grow as a performer. He would also like to thank his friends and family for all of their love and support.



Dorian 'Sean' Davis (Fritzie) - Sean is thrilled to return to EPAC with *Cabaret*. Some of his favorite past credits include *The Sponge-Bob Musical*, *The Color Purple*, *The Prom* (EPAC) *Big Fish* (Servant Stage) *LOVEBUG* (FFRWD Dance Company) and most recently *Jeter/u/s Ren* in *Footloose* (Revival Productions) He'd like to thank EPAC, the entire cast, crew and creative team for their dedication, support and kindness. A very special thank you to his family and friends for all their love, patience and support! Enjoy the show!



Jeremy Ebert (Bobby) - Jeremy is very excited to be apart of Epac's production of *Cabaret*. He is overwhelmingly thankful to EPAC and its patrons for an over 12 year stretch of musicals, plays, friendships and joy, and he doesn't plan on stopping! Notable credits include *Angels in America* (Louis Ironson) *Equus* (Alan Strang), *Rock of Ages* (Drew) *The Little Dog Laughed* (Alex), *Spring Awakening* (George), *13: The Musical* (Arichie), *Suessical* (The Cat in the Hat), *The Odd Couple* (Felix), *The Crucible* (Cheever), *Grease* (Rodger) *Rosencrantz & Guildenstern are Dead* (Rosencrantz), *Hair*, *West Side Story*, *Something Rotten!*, *The Who's Tommy*, *American Idiot*, *Passion*, and *The Prom*. Special thanks to Ed, Ben, Halli, production teams, board of directors and patrons of EPAC. Thank you to his parents Marylee and Chris and sister Erica!



Rachel Faust (Fraulein Kost) - Rachel is both thrilled and anxious to return to the EPAC stage in her first musical since 2015. Audiences may recognize her from EPAC's *The Little Dog Laughed* and *How I Learned to Drive* last year, and most recently, *Angels in America*. Favorite roles include Abigail Williams (*The Crucible*), The Angel (*Angels in America*), and Megan Jones (*Puffs*). She would like to send her sincerest thanks to Ben, Halli, the entire cast and creative team, as well as her support system for their unwavering love and encouragement. Special shoutout to her favorite sound guy, Grant, for sharing all of his musical knowledge and for being so incredibly supportive. Last but not least, thank YOU for being here and supporting the arts in our community.

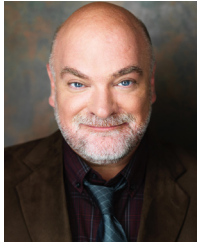
MEET THE CAST



Zach Haines (Cliff Bradshaw) - Zach is thrilled to be playing this absolute dream role in an absolute dream show. Frequently seen on the EPAC stage, some of his favorite credits include Brick Pollitt in *Cat on a Hot Tin Roof*, Trent Oliver in *The Prom*, Lord Clapham in *Something Rotten!*, Hank/Larry in *The Boys in the Band*, and Action in *West Side Story*. He would like to extend thanks to the cast, team, and audiences for making this show an incredible experience, and love and gratitude to his friends and family for their support. "Life is beautiful."



Clara Laube (Lulu) - Having most recently been in this season's *Rock of Ages* as Sherrie, Clara is so honored to be back on the EPAC stage.

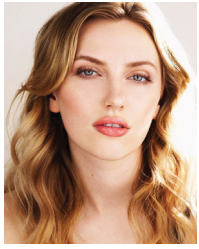


Marc Lubbers (Herr Schultz) - Marc is pleased and proud to be making his EPAC debut in this fabulous production of *Cabaret!* Previous credits include *A Funny Thing Happened on the Way to the Forum* (Pseudolus), *Hairspray* (Wilbur Turnblad), *Inherit the Wind* (Henry Drummond), *An Enemy of the People* (Peter Stockmann), *Antigone* (Kreon), and NBC's *Young Rock* (Rob Reiner). Marc is represented by CPM Talent Management and Affinity Artists Agency (NY & LA). He thanks Kathy, Anthony and Alex for their patience and support as well as this magnificent cast and crew for allowing him to be part of this experience! www.MarcLubbersActor.com



Rogan Motter (Ernst Ludwig) - Rogan is happy to be back on stage in *Cabaret* celebrating his 10th anniversary with EPAC. Rogan has a close relationship with *Cabaret* having worked as an usher at Studio 54 during the Sam Mendes production in the early 2000s. Previous EPAC credits include *Sweeney Todd*, *Spamalot*, *Peter and the Starcatcher*, *Amadeus*, *Ragtime*, *King Lear*, *The Man Who Came to Dinner*, *Death of a Salesman*, and *The Temperamentals* (staged reading). Much love and thanks to the EPAC staff, family and friends.

MEET THE CAST



Rachael Opdenacker (Sally Bowles) - Rachael is a New York City based actress and queer nightlife performer. Previous Lancaster credits include *Beauty and the Beast* (Fulton Theatre), *Footloose* (Fulton Theatre), *The Cripple of Inishmaan* (Helen McCormick, EPAC), and *Hello, Dolly!* (EPAC). Most recent NYC credits include *54 Sings Bandstand* (Julia Trojan) at 54 Below, *Screenplay by Stalin* (Narrator), and various burlesque shows throughout lower Manhattan and Brooklyn. Instagram: @thebarbieshowgirl



Amanda Phillips (Rosie) - Amanda is thankful to be back on stage at EPAC after spending time behind the scenes choreographing & focusing on her career in education. She previously appeared in *The Rocky Horror Show* (Columbia), *Joseph...Dreamcoat* (Wife), *The Producers* (Usherette), and *Dog Sees God* (Tricia). Some of her credits at Genesis Theatre include *Legally Blonde* (Elle Woods), *Follies* (Young Sally), and *The Who's Tommy* (Sally Simpson). She is humbled to help bring this story to life, and she hopes it inspires you to find a way to make a difference for someone who needs it. Action is the only remedy to indifference: the most insidious danger of all. -Elie Wiesel. 'All my love to Mom & Matthew. For Carol & Ed, always.'



Sarah Reynolds (Frenchie/Dance Captain) - Sarah (she/her) is excited to make her EPAC stage debut! Sarah is a New Jersey native and is thrilled to be apart of the Ephrata community. She first worked with EPAC last season as a choreographer for *The Prom* and *The Phantom of the Opera*. Much thanks to her family for always supporting her and to Alec for being her anchor in life!



Alec Skwara (Max) - Alec emerges from his office in the depths of EPAC to assist in presenting *Cabaret* to the EPAC community, alongside the talented cast and exceptional production staff. Alec last appeared on EPAC's stage in *Clybourne Park* and remains the Managing Director of the theater full-time. He extends gratitude to Ben for welcoming him into this production as it will be Alec's first musical performance in over five years. He sends love to Sarah, Thomas, and his parents for their never-ending support.

MEET THE CAST



Julia Smith (Fraulein Schneider) - Julia is delighted to make her EPAC debut as Fraulein Schneider. A veteran of professional theatre, Julia travelled Western Europe, Brazil and the south western United States in *Smokey Joe's Cafe*, by Lieber and Stoller, with direction from Broadway director, Jerry Zacks. She enjoyed summer stocks in Maine and New Hampshire playing such favorite roles as Adelaide in *Guys and Dolls*, Eliza Doolittle in *My Fair Lady*, Ado Annie in *Oklahoma!* and Meg Brockey in *Brigadoon*. She studied theater at Bard College where she met, unbeknownst to her, the man she would marry 15 years later. She lives happily with said man, two children and her cat in nearby Berks County.



Kat Thorpe (Helga) - Kat is thrilled to be part of her first production at EPAC! Kat is a Communications Theatre major with a minor in Music at Millersville University. Some of her favorite roles include Sue Snell in *Carrie*, Rona Lisa in *The 25th Annual Putnam County Spelling Bee*, and the Emerald City Guard in *The Wizard of Oz*. At Millersville, Kat's latest project was directing and choreographing *Big Fish*. Currently, she serves as Assistant Director and Choreographer for *You're a Good Man, Charlie Brown*. Beyond theatre, Kat loves teaching color guard and twirling baton in the marching band. She is thrilled to perform with this incredible cast in her EPAC debut!



Sydney Thorpe (Herman) - Sydney is over the moon to be featured in her second production here at EPAC. Coming from a long history on stage, her favorite roles have been Constance in *Rock of Ages*, Ugly in *Honk: the Story of the Ugly Duckling*, Frankenfurter in *The Rocky Horror Show*, and Annelle Dupuy-Desoto in *Steel Magnolias*. Sydney is honored to be a part of this diverse and talented cast.



JP Welliver (Victor) - JP is so thrilled to be returning to the EPAC stage! He was last seen as Robin in *Something Rotten!* back in 2021! Since then, he has been House Managing and bartending with EPAC and continuing to work full time as an Account Manager at Webstaurantstore. He got to live out his childhood dream and make his national TV debut this year on *Wheel of Fortune* too! He writes a weekly blog on Mondays, so you can follow along at mrsunshinesmiles.com. He is thankful for this opportunity and grateful to the cast and production team (and his front of house staff) for giving him the chance to be under the lights again! All the love to family and friends and please remember to be kind to all!

MEET THE CAST



Tell Williams IV (Emcee) - Tell, Puerto Rican-born and raised in Indiana, is thrilled to debut his German-ish accent in his first show at EPAC. Since moving to the Philly suburbs in 2018, Tell has toured the U.S. in the Bored Teachers Comedy Tour and starred in the Emmy Nominated HBO/Discovery+ tv series 'The Book of Queer'. Tell's previous stage credits include: Paul (*A Chorus Line*), The Cat in the Hat (*Seussical*), Bernardo (*West Side Story*), Lumiere (*Beauty and the Beast*), Link (*Hairspray*), Chad (*All Shook Up*). Tell holds a masters degree in social work, and works as an educator and therapist. When not on stage, in the classroom, or in therapy sessions, Tell can be found on TikTok or Instagram (@MrWilliamsPrek) where he uses humor to advocate for the LGBTQIA+ and BIPOC communities, as well as work with local, state, and federal politicians on legislation to protect marginalized groups and end gun violence in schools. Thank you to EVERYONE at EPAC, my family, my friends, my amazing husband, and my one-eyed Corgi Sir Theodore Woofington.



Elizabeth Zorzopian (Texas/Dialect Coach) - Elizabeth Sollecito Zorzopian is a singer and actor based in Lancaster, PA. She most recently appeared at EPAC in *The Prom*. Past theatre credits include Sister Berthe (u/s Elsa) in *The Sound of Music*, Jenny in *Company*, Blanche Barrow in *Bonnie & Clyde*, Thea in *Spring Awakening*, the Servant in *Blood Wedding*, and the Baker's Wife in *Into the Woods*. Opera roles include the Second Witch in *Dido and Aeneas*, Laetitia in *The Old Maid and the Thief*, and the Squirrel in *L'enfant et les sortilèges*. She holds a Bachelor of Music Degree in Voice Performance from Gettysburg College and a Masters of Science In Nonprofit Administration from the University of Pennsylvania. Love to W, O, family, and chosen family.

MEET THE TEAM

Wyatt Burdick (Light Board Operator)

Preston Cuer (Fight Choreographer)

Jeff Cusano (Lighting Designer) - Recent designs: *Next to Normal*, *Hedwig and the Angry Inch*, *Something Rotten!*, *Ragtime*, *Fun Home*, *Sweeney Todd*, *Hair*, *American Idiot*, *Sunday in the Park with George*, *Angels in America*, *Spring Awakening*, *Miss Saigon*, *The Producers*, *Jesus Christ Superstar*, *Beauty and the Beast*. Jeff owns Arethusa Designs, a lighting and event design company.

Lionella Darling (Costume Designer) - Lionella has been a personal stylist for imaginary characters for 13 years. Her designs can be found world wide. Selected regional shows include: *Chess*; *Burt & Me*; *Jekyll & Hyde*; *Gypsy* (Gretna Theater) *Angels in America*; *Cat On A Hot Tin Roof*; *Little Dog Laughed*; *Prom* (EPAC) *Rocky Horror*; *Jesus Christ Superstar*; *Hair*; *Chess* (Mickey's Black Box Theater). Selected national and international credits include *The Resting Place*; *The Gangster of Love*; *The Eva Trilogy* (World Premier, Fort Mason Center Theater, SF) *So She Heard*; *Home We Go* (World Premier, Int). She sends her love to all of her friends and loved ones for supporting her on this remarkable journey. A heartfelt thank you to all who attend; she hopes you enjoy.

Brody Eisenhour (Assistant Costume Designer) - Brody has been in love with fashion and design ever since the second grade. In middle school, he gave it a go at theater and fell in love with the world of costuming, hair, and makeup. He has designed many shows, including *Wicked Christmas Carol*, *Moana*, *Into the Woods*, *Elf*, *Peter Pan*, *Flat Stanley*, *Don't Let the Pigeon Drive the Bus*, *Curious George*, and *Oliver!*. He has assisted with many other shows including *Charlotte's Web*, *Suessical*, *Shrek*, *Christmas Carol*, *The Wizard of Oz*, and *The Prom*. He would like to thank his family for trusting his instinct, his friends for being his lifeline, Kristi and Sam for trusting his visions, and Lio for being an unwavering inspiration and role model. Thank you to the cast and crew for all your hard work, and to the audience for coming! Enjoy the show!

Keith Eyrich (Properties) - "Into the night!" We will not vanish without a fight! We're going to live on! We're going to survive!

Edward R. Fernandez (Artistic Director) - See Artistic Director section.

Ben Galosi (Director) - Ben is grateful for the opportunity to be working with such talented, generous, and inspiring artists. This is his fourth year as a part of the EPAC family, and he is extremely blessed to be given this space to learn and grow as a theatre maker. He resonates heavily with EPAC's mission to create theatre that is ambitious and culturally significant, and would like to encourage audience members to continue supporting theatre that challenges them.

MEET THE TEAM

Rebecca Gentry (Choreographer) - Rebecca is a professionally trained ballet and ballroom dancer, though she dabbles in a variety of dance styles, from Bachata to Bollywood, Tap to Tango. She is the owner of City Ballroom Ballroom Dance Studio and the director of The Dance Collective, Lancaster's only youth ballroom and latin competitive dance team. She has performed locally with the Grant Street Dance Company, UpFront Theatre Company, and PRiMA Theatre, has choreographed for both UpFront and PRiMA, as well as Encore! Home School Productions, the Lancaster Academy for the Performing Arts, Lancaster Shakespeare Theatre, and Popovsky Performing Arts. She is resident choreographer in the Manheim Central High School theatre department. This is her first production at EPAC, and she is thrilled to be on board! Much love and gratitude to Ben, Cheryl, Halli, Lio, and the cast. Shall we?

Cheryl Markle (Music Director) - Cheryl has been working on shows at EPAC ever since *Candide* back in 1991. She has served as music director in such musicals as *Anything Goes* (1998 and 2012), *The Rocky Horror Show* (2001), *She Loves Me*, *Joseph and the Amazing Technicolor Dreamcoat* (2009), *Man of La Mancha* (2010), *Evil Dead: The Musical*, *Avenue Q*, *Shrek: The Musical*, *Oliver!*, *Newsies*, *Les Miserables*, and most recently co-MD for *The Phantom of the Opera*. She is a tax preparer and lives in Leola with husband Steve and three cats.

Andrue Morgan (Scenic Designer/Artist) - Andrue is a south central PA local, and happy to be returning for his 4th season at EPAC. Previous EPAC designs include *Rock of Ages*, *The Phantom of the Opera*, *Passion*, *The Color Purple*, *A Gentleman's Guide to Love and Murder*, and *Matilda*. He also designs for ATOMIC at Rock Litz, Millersville University, he has also worked with The Fulton Theatre and Totem Pole Playhouse. Andrue would like to thank the team at EPAC, and his friends and family for continuing support.

Grant Patrick (Sound Designer/Sound Board Operator) - Gran, our Lead Audio Engineer here at EPAC, is excited to bring *Cabaret* to the EPAC stage. He is a local sound designer from the Lancaster County area and was recognized for Best Sound Design of a Play or Musical in 2022 by Broadway World for his work in EPAC's *Amadeus*. Grant designs and sponsors these shows through his audio business, Anarchy Sound LLC. Just coming off of our production of *Angels in America*, it has been a nice change of pace working on this musical. Most of all it's been wonderful working on two shows in a row with his wonderful girlfriend, Rachel Faust.

Steve Schelling (Technical Director)

Alec Skwara (Managing Director) - See Meet the Cast section.

Halligan Upton (Stage Manager) - Halligan is thrilled to be part of this perfectly marvelous production of *Cabaret*. With fourteen years of experience at Ephrata Performing Arts Center, she grew up here attending camps and acting in youth productions. Halligan has stage managed numerous productions, including *Passion*, *How I Learned to Drive*, *Color Purple* (ASM) and *Gentleman's Guide to Love and Murder* (ASM). Additionally, Halligan is the Co-owner of Crowns and Corsets, a character entertainment company, and is currently attending Temple University for Theater. When not backstage, Halligan enjoys all things art, with a love for costume creation. Halligan would like to thank the incredible cast and crew for their hard work and dedication! She would also like to thank her parents who have made her passion for the arts possible!

EPAC ARTISTIC DIRECTOR

Edward R. Fernandez (Artistic Director) - This is Ed's 28th year as Artistic Director of the Ephrata Performing Arts Center. A native of New York City, Ed studied theatre arts at the Leonard Davies Center for the Performing Arts at the City College of New York, as well as Acting and Scene Study with the renowned acting teacher and theorist Herbert Berghof at his studio in Manhattan. In 1987, he came to Lancaster to perform in the EPAC (Ephrata Performing Arts Center) production of *The Mousetrap*, fell in love with EPAC, and decided to move to Lancaster County.

After two years of acting in the Lancaster and Berks County area, Ed was asked to perform the leading role in Edward Albee's *The Man Who Had Three Arms* at the Albee Festival at Albright College. The production was moved to the Edinburgh Fringe Festival (Scotland), where it took the First Fringe Award. Upon returning to Lancaster County, Ed directed his first show at EPAC, *Golddust*, and a western musical based on Moliere's *The Miser*. After the opening of *Golddust*, Ed went on to become one of the most prolific directors of musical theatre in the Lancaster Area. In 1996, Ed took over the reins as Artistic Director at the Ephrata Performing Arts Center.

His EPAC directing credits are too numerous to mention, besides producing all the productions over his 28 years as Artistic Director, he has directed most of them. In addition, he has directed *Pacific Overtures*, *Macbeth* and *Oedipus Rex* for Theatre of the Seventh Sister, *Cinderella*, *Pippin*, *Wizard of Oz*, *Man of La Mancha*, *Fiddler on the Roof* and *Peter Pan* for the Fulton Opera House, and *Bus Stop and Dancing* at Lungasha for the York Little Theatre, now known as The Belmont. Ed's commitment to theatre education is reflected in the classes he has taught, including Basic Acting Technique, Advanced Scene, Monologue workshops, and Musical Theatre Technique.

Ed has seen the Ephrata Performing Arts Center grow incredibly over the 35-plus years that he has been here, from a small hot barn to the beautiful year-round facility you are sitting in tonight. It was a long hard road but a wonderful, fun one as well, filled with laughter, love, creativity, and great memories.

Visit EPACTheatre.Org/Donate
to learn more about becoming
a **Friend of EPAC** or part of
the **Stakeholder Circle**

epac
**STAKEHOLDER
CIRCLE**

ABOUT THE AUTHORS

Fred Ebb - was an award-winning lyricist, librettist and director who frequently and successfully collaborated with composer John Kander. Ebb's work for the theatre included *Flora, The Red Menace; Cabaret; The Happy Time; Zorba; 70, Girls, 70; Chicago; The Act; Woman of the Year; 2x5; The Rink; And The World Goes Round - The Kander and Ebb Musical; Kiss of the Spider Woman; and Steel Pier*. His film work included *Cabaret; Norman Rockwell: A Short Subject; Lucky Lady; New York, New York; Funny Lady; Kramer vs. Kramer; A Matter of Time; Places in the Heart; French Postcards; Stepping Out*, and the 2003 Academy Award winner for best picture, *Chicago*. For television, Ebb wrote *Liza with a Z; Goldie and Liza Together* (starring Goldie Hawn and Liza Minnelli); *Ol' Blue Eyes is Back* (starring Frank Sinatra); *Baryshnikov on Broadway; An Early Frost; and Liza in London*. His last projects included a musical version of *The Skin of Our Teeth and Curtains*, with book by Rupert Holmes. Ebb also provided additional material for the updated script of Rodgers & Hart's *By Jupiter* and additional lyrics for the 1997 TV remake of Rodgers & Hammerstein's *Cinderella*.

Christopher Ishwood - was a novelist, playwright, screen-writer, autobiographer, and diarist. He was homosexual and made this a theme of some of his writing. He was born near Manchester in the north of England in 1904, became a U.S. citizen in 1946, and died at home in Santa Monica, California in January 1986.

John Kander - is a Tony, Emmy and Grammy-winning composer, a recipient of the Kennedy Center Honors Award, and a member of the American Theatre Hall of Fame. With frequent collaborator Fred Ebb, he composed the score to dozens of Broadway musicals, including *Cabaret, Zorba, Chicago, The Act, Woman of the Year, The Rink, Kiss of the Spider Woman and Steel Pier*. As a composer, Kander made his Broadway debut in 1962 with *A Family Affair*, produced by Harold Prince. A year later, in 1963, Kander met lyricist Fred Ebb. Kander and Ebb began to work together, and their first song, "My Coloring Book," was nominated for a Grammy award. Kander and Ebb's first theatrical collaboration, *The Golden Gate*, never opened on Broadway. However, the score convinced Harold Prince to hire the pair for his next production, *Flora, the Red Menace*, which opened in 1965, starring Liza Minnelli in her Broadway debut.

Joe Masteroff - Born in 1919 in Philadelphia, Joe Masteroff had only one dream from infancy: to write for the theatre. After the essential lonely childhood and four-year stint in the Air Force, he came to New York to face his future: book writer or book seller? Luckily, luck intervened. Before long he had three shows on Broadway bearing his name: *The Warm Peninsula* starring Julie Harris, and two musicals, *She Loves Me* and *Cabaret*, for which he was the book writer. His other work included the libretto for *70, Girls, 70* and *Desire Under The Elms* and book and lyrics for *Six Wives* and *Paramour*. Thanks to indulgent parents, the New Dramatists, Hal Prince and many others, Joe Masteroff retired and lived in subdued luxury until his death in 2018.

John Van Druten - was an English playwright and theatre director. He began his career in London, and later moved to America, becoming a U.S. citizen. He was known for his plays of witty and urbane observations of contemporary life and society.

NEXT ON STAGE

CHICKEN & BISCUITS

by **DOUGLAS LYONS**



SEPTEMBER 5-14
Tickets Available Now!
EPACTheatre.Org | 717-733-7966

Acts of generosity



Emphasizing health and knowledge, we work with small nonprofit organizations in Southeastern Pennsylvania to pursue their vision and improve our community.



COMPASSION

Empathy is critical to our work. Only through listening, learning, and understanding can we ensure opportunities for all.



CREATIVITY

We believe in innovation. We encourage thinking that creates a greater positive impact in our community and welcome solutions that reflect new approaches and ingenuity.



COLLABORATION

We expect honest and transparent relationships. By working together, we better equip ourselves to bridge complex issues.



INTEGRITY

Being authentic and mutually accountable matters deeply to us. We believe community resources must be used in ways that are morally responsible.



by HILTON™

"We embrace the human spirit, and we champion the value-conscious traveler."

**Located at:
400 N Reamstown Road
Denver, PA 17517**

717-366-5244



ONE YEAR TO CHANGE THE NEXT 100

Be part of celebrating 100 years of collective impact as we inspire individuals, organizations, and communities to invest in Lancaster County for the NEXT 100 YEARS.

LEARN MORE AT
CHANGETHENEXT100.ORG



CONFIDENCE HAPPENS



🔍 What sound does a cow make



🔍 How to multiply fractions



🔍 Best colleges near me



🔍 Businesses hiring near me

Blue Ridge INTERNET

brctv.com/internet

Proudly Supporting EPAC

THE ENB DIFFERENCE

A simple approach
to banking and
personalized
attention at every
step. And a constant
focus on helping
families and
businesses prosper.



Ephrata National Bank

You'll feel the difference.

(877) 773-6605

EPNB.com

Akron | Blue Ball | Denver | Ephrata
Georgetown | Hinkletown | Leola
Lititz | Manheim | Morgantown
Myerstown | Strasburg



Member FDIC



Barley Snyder

ATTORNEYS AT LAW

Innovative legal solutions
for your business.

126 E King Street
Lancaster, PA 17602

717-299-5201



Super Lawyers®



Best Lawyers

THANK YOU
For Supporting
Live Theatre

FULTONTHEATRE

Edward Jones[®]

Member SIPC

Enjoy
the performance!



Duane L Miller
Financial Advisor
600 Eden Road, Suite E
Lancaster, PA 17601
717-945-7244

MKT-58940-A AECSPAD

> edwardjones.com

SUSQUEHANNASTAGE

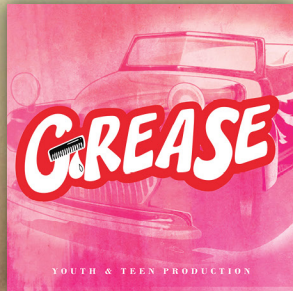
2024

SUSQUEHANNASTAGE

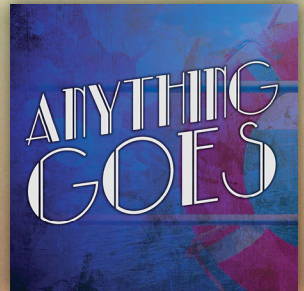
SEASON



FEBRUARY 16 - 25



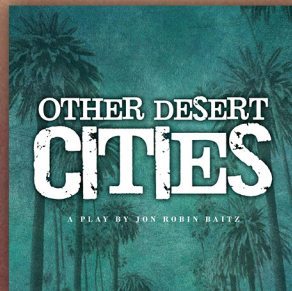
MAY 10 - 19



JULY 26 - AUGUST 4



OCTOBER 25 - NOV. 3



DECEMBER 6 - 15

133 WEST MARKET STREET MARIETTA, PA
WWW.SUSQUEHANNASTAGE.COM

*Pictured: Kodiak Thompson, Gypsy



Gretina THEATRE

WWW.GRETINATHEATRE.ORG
717.964.3627

Save up to **\$80** on tickets by choosing one of our subscriptions.

\$145 PLATINUM
5 Shows, Reserved
Premium Seats

\$130 GOLD
5 Shows, Reserved
Standard Seats

\$100 SILVER
3 Shows,
Reserved Seats



JUNE 8



JUNE 22



KNUFFLE BUNNY:
A CAUTIONARY MUSICAL
JULY 20 | 27



AUGUST 3 | 10

FAMILY

Golies

WWW.GRETINATHEATRE.ORG
717.964.3627



SEE **FOUR** SHOWS FOR THE PRICE OF **THREE** : \$30

SINGLE TICKETS STARTING AT \$10





COME TO THE TABLE.....

Your Full Service Fun Caterer!

717-682-2504 // Info@crackedpepperlancaster.com



Or you can visit us at:

PEPPER THEO CAFE & EVENTS
"LANCASTER COUNTY'S MOST UNIQUE EVENT VENUE"

717-341-6565

theoevents@crackedpepperlancaster.com

Genesisus Theatre



Creating quality theatre since 1971.

Tickets and information at

genesiusdifference.org

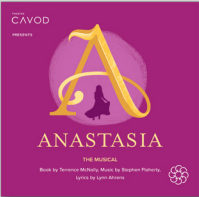
THEATRE

CAVOD

PRESENTS

For ticketing information and show times,
VISIT CAVOD.ORG,
or call 717-354-3355

641 West Main Street
New Holland, PA 17557



Anastasia: The Musical
March 1-3 & 8-10

To Neverland
April 12-14



Matilda: The Musical JR.
Camp: July 15-26
Shows: July 27-28

Mary Poppins
October 18-20 & 25-27



Create with Purpose

EPAC FALL MINI CAMP:

Disney
MOANA
JR.

OCT 21-NOV 2 | SIGN-UP INFORMATION COMING SOON!

Ephrata American Legion Post 429



DINING ROOM OPEN DAILY

We take pride in homemade dishes, fresh produce, and bakery style breads-- all delivered daily.

We offer daily and weekly specials that you and your family will love!

Some weekly staples:
Taco Tuesday
Burger of the Week

HOURS

Mon: 5PM-11PM

Tue: 4:30PM-11PM

Wed: 4:30PM-11PM

Thu: 4:30PM-11PM

Fri: 11AM-1AM

Sat: 3PM-1AM

Sun: Closed

It's time to renew your membership OR become a member!

Social memberships are available to the public
wanting to support our veterans.

Follow us on Facebook for upcoming events!
Trivia, Festivals, live music, and more!

For more information:

ephratalegionpost429@gmail.com | 717-733-2576

SOUND PROVIDED
BY

Anarchy Sound



www.anarchysound.com

LLC



AnarchysoundLLC@gmail.com

Scan to
learn more





A RETHUS A —DESIGNS—

LIGHTING AND EVENT DESIGN
LIVE PLAYBACK SOLUTIONS

Scary Good

PRODUCTIONS

**For your production,
sales, rentals, design, installation,
repair, & consulting needs.**

**175 E King Street, Suite 8
Ephrata, PA 17522**



info@scarygoodpro.com



scarygoodpro.com



(717) 721-9893



(609) 718-2116

**We are proud to support
Ephrata and its community!**



PRODUCTION SERVICES DESIGN ATOMIC
SET CONSTRUCTION MODULAR SYSTEMS





CONCERTS & PERFORMING ARTS



PARTIES & SPECIAL EVENTS



MICKEY'S BLACK BOX

**Where music, arts, and events
connect the community.**

Located in Rock Lititz

101 Rock Lititz Blvd, Lititz, PA | mickeysblackbox.com | 717-723-8463

DAVID LYALL

HOME & DESIGN

20 **D** 16



**BERKSHIRE
HATHAWAY**
HomeServices

Homesale Realty

Douglas Smith
717-725-8848 (Cell)
717-560-9100 (Office)

EPAC's GENEROUS DONORS

Thank you to the following donors, whose belief and generosity in the arts in Ephrata ensures that the best theatrical experiences can be found only at EPAC.

THE VANGUARD (\$10,000 and up)

Dr. Andrea Glass & Matthew Heffner
David Lyall & Douglas Smith
David Dierwechter & Marcia Stoner
Rick & Susan Stamm

THE AVANT-GARDE (\$7,500-\$9,999)

Dr. Clark McSparren
Rogan Motter

THE VISIONARIES (\$5,000-\$7,499)

Dr. Kenneth & Cheryl Arthur
Bob Checchia
Nancy Cook
Andrew & Preston Cuer

Ralph & Lola Mowen
Jennifer Schlener-Thomas & Roy Thomas
Donald Vaughan & Charles Romigh
Dr. Jon Walker

THE INNOVATORS (\$2,500-\$4,999)

Drs. William & Jane Cowden
Dr. Heather & Scot Larrimore
Keith Martin & Dan Donohue

Marilyn Stein & Dale Mellinger
Donald & Nancy Stewart

THE TORCHBEARERS (\$1,000-\$2,499)

Dunkers Charitable Trust
Diane Ennis & Joseph Cantwell
Dr. Wendell Funk
The Gilded Lily
Chris Goodling
Zach Haines
Caroline Herr
Louise & Ken Hess

Mark Ohlinger
Robin & Leonard Payne
Mark & Nancy Randall
Pat Smedley
JP 'Mr. Sunshine'
Dr. Marjorie Warmkessel
James Whalen & Thomas H Wentz III
Woman's Club of Ephrata

THE DOERS (\$600-\$999)

Glen & Nancy Bergert
Ben Kauffman
Fred Kohler
Darcy Pollock

Dolly Szymanski
Elizabeth & Ronald Wrobel
Sandy & Ruiza Yee

THE BELIEVERS (\$300-\$599)

Maralyn Anderson
- *In Honor of Ed Fernandez and
the Cast of Cat on a Hot Tin Roof*
Jennifer Hoke Bentivogli
Carl Bomberger
Rick & Dawn Burkey
Don Canull & Michele Forry
Victor Capece
Tricia, Kylie, & Quinn Corcoran
Karen Cuer
Lynne DeMers-Hunt
Jim & Cora Dum
Don & Judy Durand
Thomas Englert
Dave & Tam Fassnacht

Fenner Precision Polymers
Dawn Frees
Gaia Lazzarini-Gamble
Craig Gerhart
G.R. Klinefelter Underwriters
Gooding Group Foundation
Randi & Bill Jacobson
Joan Kachel
John & Holly Kleimo
Traci & Kevin Kohl
Constance Kossan
Milt & Judy Lauch
Jody & Bob Lausch
Ron & Jill Moyer
D. Nixon

THE BELIEVERS, cont'd (\$300-\$999)

Anne Ostrowski
Elizabeth Pattey
Doug & Laurie Rebert
Ricky & Joanne Ressler
Robert & Thelma Roscoe
Charles & Mary Rost

Pat & Dennis Seibert
Rosanne & David Selfon
Scott & Nancy Silverstein
Alec Skwara
The Ulzingos
Jordon Ross Weinhold

THE DREAMERS (\$100-\$299)

Mr. & Mrs. Timothy Anderson-Schick
Marc Baase
Richard & Nancy Bacon
Carol & Ken Barrett
Pam & Ken Beiler
Betti Bell
Lou & Mary Lou Bercheni
Janet Bertoni
Adlai Binger & Craig Lorah
Dave & Paulie Bird
Tara & Jeremy Bischoff
Bruce & Joan Boydell
The Branle Family
Vincent Bresch
Lauren Brignone
- In Honor of Carl Bomberger & Mike Rhoads
Peter & Jane Brown
Ryan Burkholder
Winnie Cammauf
John Clark
Nicole Clark
Moni Daniels
Karen & Robert Davis
Barbara Dillon
Gail & Jeff Donahue
Jeff & Susan Dremann
Faith Drummond
Ray Edmison
EHD Insurance
Stephen & Marijane Ember
David Endy
Glenna Eshleman
Rodney & Jeralyn Fenstermacher
Lorelei Ferre
Mark Flannery & Jeffrey Lentz
Philip & Kathleen Forney
Dee & Don Forry
Andrea & Owen Fox
Natalie Freedman
Brian & Jennifer Frey
Bonnie Fry
Angelique & Tyler Fugate
Robert & Liz Garrett
Scott & Judy Giacobbe
Henry & Jolyn Gibbel
Alan Glazer *- In Memory of Linda Glazer*
Laura Good
Shellie & Steve Gordon
Randy & Margie Goshert
Jay & Becky Groff
Mary Haesche
Laurie Haines
Lisa Harris
Christina Hausner
Phil & Terri Hess

Brigitte Hinds
Grace Hoefner
Sharon Hoffberg *- In honor of Regina Sukanick*
Marie Hollis-Kosmela
Andrew Hunt
- In Honor of Lynne DeMers-Hunt
Gail Johnson & George Nissley
Carol Keller
Dennis & Georgia Kerschner
Anne & Tim Koenig
Mary Kreider
Vickie Kutz
Lori Kuziak
Greta Laube
Jody & Bob Lausch
Lorena Lazarchick
Stewart Lewis
Judy Light
Barbara Lord
Kathy & Marc Lubbers
Dan & Edie Margolis
Rose Marie Mariani
Darrell & Katherine Martin
Don & Bonnie Martin
Kris McKinney & Jon Sullenberger
Sam M. Mecum
Rich Mehrenberg & Jill Slutak
Richard & Sandy Mellinger
Magic Minute
Andrue Morgan
Edward Motter
Damon Myers & Dr. Mag
Linda & Wes Neumann
John & Candace O'Donnell
Hope O'Pake
Barbara Parks
Ken & Donna Patrick
Jane Pattey
Barbara Penner
Carol Phillips
Rudy & Marsha Popolis
Leigh-Ann Powers
Bill & Kay Raffensperger
Ken & Judi Ralph
Robert & April Reese
Christopher Reggio & Joseph Manning
Debra Reichard
Dennis Reinaker
Dennis W. Renner & Michael T. Krone
Shaun & Kayla Ressler
Janet Rettew
Chuck & Robin Rieck
Randolph Riggs
Kim Roberts
John Rohrkemper

THE DREAMERS, cont'd (\$100-\$299)

Eudora K. Roseman
Jim & Theresa Russell-Loretz
Mimi Ruth
Karen Sage
Hannah Salvatore
Bill & Shirley Schlener
Harvey Scolnick
Kay Shanaman
Darren Skwara
Tim & Aprielle Slajchert
Alan & Donna Smith
Thomas & Lauren Smith
Carolyn Stauffer
Maggie St. Clair & Kelly Thomas
Spencer & Lois Stober
Regina Bowe & DJ Sukanick

Michael & Noreene Sweeney
Pamela Tronsor
Allison Troy -*In Honor of Rosy Troy*
Jessica VanGiesen
Kurt Van Gilder & Dave Benner
Susan Wagner
Ulli & Paul Wagner
Ralph Walker
Jessica Weidenhammer
Dennis Weiss
Hans-Erik & Linda Wennberg
Gabby Woods
Susan Wroblewski
Bob Wyble
Barbara & John Younker

THE FRIENDS (up to \$99)

Joseph Abramowicz
Larry Allen & Jeff Wilson
Claudia & Herb Altman
Esther Angell
Derrick Apps
Nancy Aronson
Jonathan Atkins
Mary Ellen Bachman
Paul & Irene Bahner
Rich & Steph Barbour
Patricia Barconey
Heidi & Joe Battisti
-*In Memory of Sophia Ava Battisti*
Robert & Sharon Beam
Craig E. Beck
Katherine Becker
Therese Bennett
-*In Honor of Andrew & Preston Cuer*
Erin & John Biles
Beth Bilsborrow
Virginia Biniek
Ralph & Kathy Bisonic
Linda Boomer
Donnie Branstetter
Joanna Brelvi
Jennifer Brossman
Madison Brubaker
Doug Burkholder
Bob Busillo
Delphine Butcher
Sean & Kwyn Caldwell
Joe & Jean Chaballa
Aaron Chang
Rev Chavis & Andy D.
Craig & Nancy Clinger
Cindy Colton
Eileen Conn
Diesha Cooper
Cecelia Cox
Anthony Crerand
Joan & Tom Dautrich
Janet Deffley
Sean Deffley
April Delvisco
Audrie Marsh De Vitry

Adam Dienner
Rita Dispirito
Cara & Kevin Ditzler
Eva Dombrowski
Luke Dubin
Tina Dunsen
Bess Eckstein
Tori Elliott & Family
Ryan & Casey Ellis
Jane Englert
Carole A Erikson
Allan Eustis
Scott Fabel -*In Memory of Trevor McDonald*
Nicole Fickes
Tim & Sharon Fickes
Jack & Julie Fischel
Carol Flick
Dennis Foreman
Robert & Phoebe Forlini
Katherine & Finneghan Forrester
Anne & Jack Freas
Richard Frerichs
Eileen Frey
Jody Funk
Sara Galosi
Dylan Garner
The Gawn Family
Harry & Grace Gerhart
Kathy Glass
Iolanthe Good
Linda Good
Lisa Good
Brian & Elaine Green
Bill Groff
Gail Scott Groves
Janet Hagy
Kevin & Julia Haigh
Rita Haley
Deborah Havert
Sue Hehny
The Hemsley Family
Jan & Charlie Herchelroath
Susan Heydenreich
Nancy Hickey
Ebony Hicks

THE FRIENDS, cont'd (up to \$99)

Cathy & Richard Hinnenkamp
Steven Hirschtritt
Amy Hoffman
John & Susan Hoffman-Terlizzi
Jay Holler -*In Honor of Sara & Alex Holler*
Britt Jarkowsky
Cindy Jennings
Linda Jones
Crawford Kauffman
Peggy & Mike Keller
Terri Kilrain
Jeffrey B. Koller
Sharon Kress
Linda Krick -*In Memory of Stephanie Krick*
Greg & Lori Kulp
Jordan Lausch & Tyler MacDonald
Connie Lawrence
Jack Leonard
Nancy Lewis
Diana Locke Forrest & Janice Long
Dorothy Love
Susan L. McMullen
Gary & Margie Miles
Paul Mohr
Eric Nissley
Peter & Linda Novosel
Sara O'Donnell
Carol Orts
Joanne Pantanella
Henry Patterson
Kaye Peloquin
James Peloquin
Jacqueline Peralta
Fox Peters
Regina Pollock
Joseph & Mary Ann Puleo
Jody Ream
Stacey & Kris Reddig
Vicki Reed -*In Memory of Pat Kautter*
Bill & Karen Reynolds
Nicole Robb
Susan Rohn
Beth Romanski
Rhonda Rombach
Nicky Roth & Chris Neumann
Jeanne Marie Rose
Will Rosenwinkel

David Sacks
Tara Sasse - In Honor of Maeve
Jill & Jay Schaeffer
Anna Rose Schannauer
Steph & Tim Schreyer
Beth & Dan Schultz
Nicole Schwartz
Debra Schwen
Sarajane Sein
Joanne Servansky -In Honor of Kris Gehman
Catherine Sharp
Amy Shober
Dolly Shuster
Michael C. & Karen Smith
Starr Snyder
Elizabeth Sollecito
Abby Sollenberger
Vivian Spiese
Beth & Mike Stawitzky
Kurt & Joan Steidle
William Stober
Meredith Stone & Robert Rivera
Ed & Jan Stone
Mark Stoner
Scott & Lisa Strickland
Paul & Judy Strubeck
Valerie Strunk
Dan & April Sukanick
Susan Sweigart
Wayne Szwarc
Dennis & Judy Trupe
Kelly Trynosky
Halligan Upton
Rena Veneziale
Lorraine & Arthur Vignoli
Carcy Vreeland Jennie
Weinhold Anne
Marie Weller
Gil & Carol Welliver
Frank & Linda Werts
Joe Winters
Kelly Thompson Wobrak
Carol Woodman
Merv Wright
Sandra Yeager
Steve Ziegler & Lydia Brubaker

Donor Information Collected from 7/7/23-7/7/24

THANK YOU FOR SUPPORTING EPAC!

If you'd like to make a donation, please visit EPACTheatre.Org/Donate

**EPAC is greatly appreciative of all its generous donors, and we do our best to honor you appropriately.
If you see a mistake, please reach out to us at officemanager@epactheatre.org**

Join Our Team!

Clark Associates is the #1 food service equipment and supplies dealer in the country and has been recognized as one of Central Pennsylvania's fastest growing companies! As a collective of dynamic companies, we serve a diverse client base through top-quality services across the nation and credit our success to hiring only the very best talent and keeping a strong focus on company culture, and employee engagement and development.

OUR COMPANIES

WebstaurantStore

The Restaurant Store

CLARK FOOD SERVICE EQUIPMENT

11400 ELEVEN FOUR HUNDRED, INC.

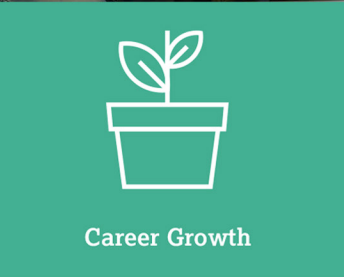
CLARK NATIONAL ACCOUNTS

NOBLE

REGAL

Vertical Converting, LLC

Please visit clarkassociatesinc.biz/careers for available job listings and paid internships.



CLARK ASSOCIATES
HARITABLE
FOUNDATION

Through the generous support of Clark's customers, employees and varied companies, the Clark Associates Charitable Foundation is proud to once again support the Ephrata Performing Arts Center.

SUPPORT THE ARTS IN EPHRATA

There are several ways that you can support EPAC so that we can continue bringing the highest quality theatre to Lancaster County.

To find out more on what opportunities are available, from donations, to sponsorships, to advertising, please visit:

EPACTheatre.Org

